



Kirklees **ActiveLeisure** Annual Report

**06/07**



KIRKLEES **ACTIVE** LEISURE

## Contents

About Kirklees Active Leisure	4
Chairman's Report	5
Strategic Objectives	7
More People	9
More Swimming	10
Better Facilities	12
Children and Young People	14
Adults and Older People	16
Social Inclusion	17
Events and Community Activity	18
Customer Satisfaction	19
Our People	20
Our Future	21
Financial Report	22
Company Information	24





KIRKLEES **ACTIVE** LEISURE

more people,  
more active  
more often  
in kirklees

# more people, more active more often in kirklees

## About Kirklees Active Leisure

Kirklees Active Leisure aims to get "**More People, More Active, More Often, in Kirklees,**" and provide affordable sport, leisure and recreational activities for local people.

Following a detailed review of sport and leisure facilities in the district, wide consultation with users and non users, and a Best Value Review, the Council determined to enter into a Trust arrangement for its Leisure Management Activity.

The review identified the need to invest substantial amounts of funding to address the decline in the structural condition of the buildings. This issue is not unique to Kirklees; it is a countrywide problem. There is a high demand and usage of these facilities, particularly those providing for swimming and "pay and play" activities. The review also recognised that the community wanted facilities in good condition, within reasonable distance of the population concentrations.

The Trust gained Charitable Status and formally came into being on 1st April 2002. It is a completely independent body with the Board of Trustees making decisions, but with the Council and the Trust working together in partnership.

The Trust is responsible to an eight member board comprising of local people and chaired by David Heddon, former Regional Director of Sport England. The Trust and the Council have signed a Statement of Understanding which summarises mutual aims which are intended to improve the service and the facilities, while at the same time meet the needs and aspirations of the community of Kirklees. The agreement ensures that charges to customers will be affordable.

## Chairman's report 2006/7



### On behalf of the Trustees of Kirklees Active Leisure, I am very pleased to introduce our 5th Annual Report.

It would be misleading to suggest that this has been anything other than a very challenging year for the Trust in both operational and financial terms. Nevertheless I am delighted to report another year of significant achievement. The completion of the improvements to Dewsbury Sports Centre has made it one of the best local facilities in the area, and the community has responded and shown its support by the increased use of the centre. The fitness suite and spa area at the centre are excellent and have raised the standard to which public facilities can aspire. Other facilities include a children's gym and dance area.

In partnership with Kirklees Council, we have been able to continue our programme of investment in order to improve the facilities for our users. The Council's continued commitment to improving the physical structure of its leisure facilities in compliance with Disability Discrimination legislation is complementary with the improvement work and investment by KAL.

Examples of these improvements include the completion of the second phase of improvements to the Stadium Health and Fitness Club, and equally important but on a lesser scale, the conversion of a free weights room at Batley Sports and Tennis Centre to a modern fitness gym while retaining the opportunity for weightlifting activity. There are plans for further improvements and investment into existing facilities in the coming year. The Council's continued commitment to improving the physical structure of its leisure facilities in compliance with Disability Discrimination legislation is complementary with the improvement work and investment by KAL.

This year also saw the Trust taking on the management for community use of three new sports facilities built on school sites in a partnership arrangement with the Council. Community access to school based facilities will become an increasingly important issue as the "Building Schools for the Future" programme impacts on Kirklees in coming years.

I am excited by the development and take up of the "More" card scheme. This card allows multi-site use of ten leisure centres across Kirklees. On-line booking processes will be introduced in the future which will enable even easier access to all the programmes on offer.

Kirklees was successful in being selected this year as one of seven national pilot projects for the Everyday Swim Campaign. The project sponsored by the Amateur Swimming Association in conjunction with Sport England and other partners, aims to get more people swimming, to use swimming as an activity to address health inequality issues, and to look at how pool-based activities can be made more fun.

Earlier, I made reference to the financial pressures we have faced during the year. Although our turnover continues to grow, so does our expenditure. We have managed to achieve an 8% increase in operational income with usage up by 7% against 2005/6 figures. The managers have continued to seek efficiencies and have maintained high levels of service to our customers. We shall continue to look for innovative ways to match our income with expenditure, while continuing to fund improvements to facilities and services.

I have the privilege of chairing a Board of very competent and committed Trustees who give their time and expertise generously. My thanks go to them once again for their support to myself as Chairman, and for the active role they play in the work of the Trust.

None of the successes mentioned could have been achieved without the support and efforts of all our staff. Not only the Senior Management Team, but all the managers, support staff, and front line staff working in the facilities, who work so hard to provide a quality service to our customers.

The Trust can only operate effectively in partnership with Kirklees Council. I would like to thank all the Council staff who have supported Kirklees Active Leisure in different ways during the course of the year, and in particular the Culture and Leisure Development staff whose partnership patience and support is critically important to the future success of the Trust.

As ever, my final thanks go to our customers – those members of the Kirklees community who use our facilities in increasing numbers. Despite this success, we still face a huge challenge if we are to get “More people, More active, More often in Kirklees” and, with other partners, to reach the targets we have set ourselves.

My thanks to all involved in the continued success of Kirklees Active Leisure.

**David Heddon**  
**Chairman of the Board**  
**Kirklees Active Leisure**

## Strategic objectives

### 10 Year Strategic Performance Plan - Aims and Objectives

Kirklees Active Leisure (KAL) is working towards the following ten year objectives to be achieved by the year 2012:

1. KAL delivers a full range of diversionary services designed to contribute to the objectives of the Crime & Disorder Strategy for Kirklees.
2. KAL, through its service provision is acknowledged and valued as a partner in improving health and wellbeing among the local communities of Kirklees.
3. KAL delivers a range of services targeted at promoting social inclusion among the communities of Kirklees.
4. KAL supports the development of sport and pathways from Foundation to Excellence levels and provides educational/vocational opportunities through sports development.

5. KAL is considered by its staff as a good employer and fun to work for.
6. KAL has proof and evidence of improving user satisfaction, user and non-user perception of value for money, detailed usage against its objectives, and has systems for stakeholder input into service planning.
7. KAL has reduced the percentage of its Council grant to turnover and has plans to reduce it further while remaining a going concern.
8. KAL has an increasing income stream year on year and an improved usage profile based on a balanced scorecard.
9. The facilities and equipment used by KAL are of a high quality with minimal breakdowns in service and a planned programme of improvements is in place.

## More people



Kirklees Active Leisure's main aim is to get "More People, More Active, More Often, in Kirklees" – and this year we have definitely achieved it.

Usage figures are better than ever, with nearly two million visits to our centres clocked up in 2006-7. This is a big jump on the previous year when we had 1.7 million visitors. Not only is this great for the health and wellbeing of the people of Kirklees, but also brings the organisation closer towards its strategic aim to be ultimately self-funding.

Two of KAL's biggest sites the Stadium Health and Fitness Club and Dewsbury Sports Centre increased their income by 4% and 9% respectively, with usage figures shooting up accordingly.

All the recently opened school sites supported by the Big Lottery Fund are achieving user and financial targets.

Batley Sports and Tennis Centre enjoyed a successful year with sport income £79,000 above target. In particular, the Tennis Centre achieved its best year yet, up £10,000 on the previous year and maintaining crucial sponsorship with Head UK.

In January 2007, Scissett Baths opened up from 8am on Mondays and Fridays, where previously it had been closed until midday. We can now offer a more flexible and varied pool programme, with swimming lesson usage and income boosted with additional youngster's ducklings and water confidence classes.

One of KAL's biggest growth areas is gym membership, with More Membership increasing across the board. The Stadium Health and Fitness Club expanded by another 836 members, offering additional incentives to remain loyal, including quiz nights and a triathlon event.

Spenborough Peak Physique – to be renamed More Fitness in the summer – reached 1,000 members this year. The much smaller centre at Scissett Baths increased its opening hours and boosted membership by 113%.

Whitcliffe Mount Sports Centre, which does not yet have a fitness suite, instead offers 28 varied fitness classes which has increased usage by 20%.

## More swimming

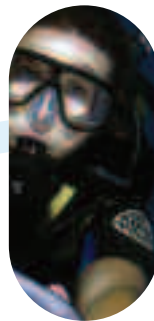
Swimming has always been a priority for KAL, making up about 40% of the business, but it is now trailblazing a new pilot project Everyday Swim.

One of eight in the country, Everyday Swim aims to get more people into the pools, tackle health inequalities and encourage healthier and happier lifestyles. In February 2007, a project co-ordinator for Everyday Swim Kirklees was appointed. The project's overarching objective is to increase swimming activity by 2% within two years. Plans include free and discounted taster sessions, new equipment in all pools, extra lessons and advertising campaigns to encourage people to go swimming or take up new pool activities.

New "Aquamed" sessions (gentle exercise in water) are already flourishing at Holmfirth Pool and Scissett Baths with more classes planned. Spenborough Pool, which has enjoyed numerous galas this year, has introduced canoeing sessions and children's diving courses.

Huddersfield Sports Centre and the Stadium Pool have also played host to numerous school and club galas throughout the year.

Other new swim sessions include Mini-sharks, a coaching session for promising youngsters aged six and under pioneered at Scissett Baths, Rookie lifesavers and H squad (for older children) at Holmfirth Pool.



## More swimming

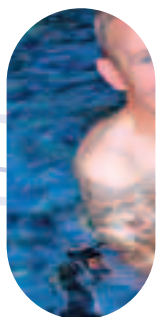
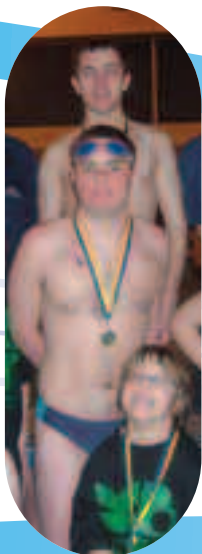
Our pools have all increased their swimming lesson provision. Once Batley Baths opens on Sundays from May 2007, it will also offer extra water confidence and duckling courses as well as provide more time for one to one sessions.

Customers have been clamouring for one to one lessons, with demand up by 50% at Batley Sports and Tennis Centre. To satisfy this, more staff are training to become swim teachers.

The fun element of swimming has been emphasised this year with the new Walk on Water Balls and Sea Scooters introduced at most sites. Not only have these proved extremely popular, they have boosted pool attendance in general with fun swims up by at least 10%.

The Borough of Kirklees Special Needs Swimming Club coached by dedicated staff at the Stadium Pool continues to inspire thousands and is set for national recognition. Members of the team clinched medals at several high-profile national and international competitions, including the Special Olympics Swimming Event in June, the Down's Syndrome National event in September and the National Championships for Young People with a Disability in November.

Their fantastic performance at these events has spawned a wealth of media interest – and the Stadium Pool's trophy cabinet is groaning under the weight of so much gold. The team now has its sights firmly set on the World Championships in 2008.



## Better facilities

This year was a massive one for refurbishments, including a major overhaul of Dewsbury's fitness suite and new changing rooms for the Stadium Health and Fitness Club.

Dewsbury Sports Centre reopened in November after months of work to transform the former gymnasium and indoor running track into an 80 station fitness suite on a mezzanine floor, with dance studio below. The former fitness suite area is now used as a session (sometimes ladies only) gym, with half the area filled with Shokk Gym equipment for young children.

The public baths, showers, spa and sauna area was increased in size and fitted with the latest spa equipment including aromatherapy room, sauna, steam room, ice station and spa pool for people to relax and unwind after playing sport or doing an activity class.

This £1.1 million project follows on from the refurbishment of the wetside, changing rooms, café and reception area the previous year and completes Dewsbury Sports Centre's new look. The centre now boasts the best facilities in the area, with increased disability provision as a standard part of the refurbishment.



## Better facilities

Changing rooms at The Stadium Health and Fitness Club were refitted and reopened in December 2006, completing a two year £½ million refurbishment project. Significant works were also carried out to the Stadium Pool floor in August, funded by Kirklees Council.

Two further school sports facilities were built and opened this year, courtesy of the Big Lottery Fund. Colne Valley High School and Westmoor Community Sports Hall both opened their doors in Spring 2006, offering superb facilities to both pupils and to the local community out of school hours.

Colne Valley High School now enjoys a four-court badminton hall with four changing rooms, disabled changing facilities, reception area and outdoor floodlit Astro turf pitch. Westmoor's provision is smaller, with a two court badminton hall and changing rooms.

Their successful launches involving the school and local communities received well-deserved PR and media attention, which helped to boost the numbers using the new facilities.

Both centres achieved top marks in a rigorous assessment by the Big Lottery Fund. Their out-of-school activities complement programmes in nearby Colne Valley Leisure Centre and Dewsbury Sports Centre.

Batley Sports and Tennis Centre's former weights gym was also converted into new fitness suite space, with mirrors, new weights and Technogym equipment. Pupils from Batley Girls High School use the area three times per week as part of their curriculum.



## Children & young people

KAL is dedicated to providing opportunities for children and young people to exercise and supporting the development of pathways into sport for our future athletes and Olympians.

Tackling the worrying problem of obesity among youngsters is paramount, resulting in a wide variety of activities, coaching sessions and classes now on offer to children across the district. The following are just a few examples of the wealth of tempting children's activities available to them across Kirklees:

Whitcliffe Mount Sports Centre has pioneered new sessions in roller hockey and roller blading in its sports hall, both of which are growing in popularity. The centre's junior gymnastics and football courses continue to perform well, along with the booked-up playscheme during school holidays.

Nearby Spensborough Pool and Sports Complex held 26 school events at the athletics track during summer 2006 with more regional track events during the summer months. Young people could also enjoy skateboarding lessons.



## Children & young people

A new junior hoops session was introduced to the weekly programme at Colne Valley Leisure Centre. This is complemented by the High 5 Junior Netball sessions and pathways into Giants Netball Club. New rhythmic gymnastics sessions and a junior badminton course have also been incorporated into the programme at partner site Colne Valley High School. Together, the two sites could offer double the amount of holiday playschemes and sports camps. The leisure centre also held a couple of free Judo Taster Sessions to encourage youngsters to try out the sport.

During 2006, 12 schools took part in fun days at Huddersfield Sports Centre, which benefited 640 pupils. Holmfirth Pool developed a new outdoor playscheme using its multi use games area and outdoor areas. The scheme will become a permanent fixture due to its popularity.

Dewsbury's new Shokk gym increased exercise opportunities for youngsters in a fun environment. Young PALS classes were moved from Dewsbury Hospital to the sports centre.

Batley Baths established a new playscheme and introduced a new gymnastics class which already has a long waiting list.

At Batley Sports and Tennis Centre, the number of school fun days increased by 10% with the out of school club still increasing its members. Football, badminton and tennis courses were full during the holidays as was an extended summer playscheme. KAL's football development manager continued football development with 12 schools. At the Tennis Centre, four junior teams now compete in a local league with squad players reaching the final of the Batley Open Junior Tournament. Tennis development now reaches into 32 schools.



## Adults & older people

Two collaborative projects PALS and Sport4Life aimed to encourage adults to get active and return to sport, with all the KAL centres playing an important role.

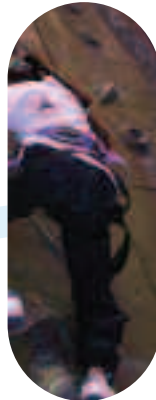
Some also made vital links with local sports clubs, such as Scissett Baths which now closely works with Wakefield Triathlon Club to provide Winter Triathlon Sessions. The Sport4Life project also introduced a running session from the baths to help improve adult fitness leading up to the popular event Race for Life.

Other sites like Holmfirth Pool and Spensborough Sports Complex also developed new running classes owing to the Race for Life phenomenon.

The Over 50s Weekday Leisure Scheme (OWLS) continues to run successfully at several sites. Most OWLS enjoy a half or full day of activities and socialising with refreshments.

Colne Valley Leisure Centre successfully set up new adult badminton and netball courses.

Back to Netball has also proved popular at Batley Sports and Tennis Centre, along with new adult squash leagues.



## Social inclusion

One of KAL's objectives is to provide facilities for all and break down any barriers to participation in physical activity. This year, we have increased provision for women-only activities at several centres to encourage females, particularly South Asian women, to exercise regularly and in comfort.

We have more disability clubs and sessions than ever using our centres and have hosted several events to promote social inclusion.

Batley Baths, home of the nationally-recognised Sitara project which provides women-only activities in a building staffed by women, has added 20 extra female-only swimming lessons. This year Scissett Baths also promoted a mainly ladies swim session which proved popular. The female only programme was increased at Dewsbury Sports Centre too.

Staff held two male-only events and one female-only event for the Asian community at Birkdale High School, which joined the KAL portfolio in April 2006. More than 2,000 men attended their events, with at least 1,000 women supporting the female-only one. Both events were the first of their kind held in West Yorkshire and are rebooked for next year.

Whitcliffe Mount Sports Centre continues to host the Cardinals Wheelchair Basketball team which plays in the National League and offers a variety of activities for wheelchair players. Partially sighted bowlers from the Society for the Blind, and Pennine Bowling Team also play in the centre each week.

Huddersfield Sports Centre holds an Actionnaires (for partially sighted and blind children) session each Saturday, in which the children go climbing, swimming and play a variety of sports. The centre was host to an Actionnaires Football event in October and activity sessions for Kirklees Kids Excluded From School (KESS) during the same month.

A blind swim is also programmed at Batley Sports and Tennis Centre, where a special needs group is also promoted in the tennis centre.

The GP referral scheme PALS, in partnership with Kirklees Council, continues to grow at all sites, with more classes and sessions being made available particularly at Spenborough Pool and Batley Baths. This year, an additional 1651 people were enrolled onto the PALS scheme.

Each week, the centres offer 172 activities for PALS, alongside swimming and gym sessions, 23 more activities than the previous year. PALS makes it possible for people recovering from illness or with certain conditions such as obesity, heart disease or diabetes to have a healthier and happier lifestyle.



## Events and community activity

Events at the sites are extremely important to encourage public and community awareness and use of the buildings. The media coverage received by some of these events helps to boost visitor figures and ultimately encourages more people to take up new activities in the centres.

Our largest site Huddersfield Sports Centre held an impressive number of trade and community sports events in its halls, including the Legends Challenge Series Snooker Tournament with famous names Ronnie O'Sullivan, Stephen Hendry and John Virgo. This is hoped to be the first of many snooker tournaments which was packed and attracted lots of media interest.

Huddersfield also hosted the annual Fresher's Fayre for Huddersfield University, a fantastic marketing opportunity bringing 5,000 students into the building, the Organic Food Festival and Huddersfield University examinations. The fourth Huddersfield Aerobathon in February, in aid of Kirkwood Hospice, brought new participants into the centre as well as enhancing the links with the organisation's designated charity.

Dewsbury Sports Centre and Batley Sports and Tennis Centre also opened their doors for Yorkshire's Biggest Aerobathon in March, for Yorkshire Cancer Research. On the same theme, Scissett Baths' staff gave up their time for free to hold their annual Charity Aquafit event which made £1,100 for breast cancer charities and Kirkwood Hospice, with a Lions Swimathon raising a further £4,000.

Whitcliffe Mount Sports Centre forges good community spirit at its regular sessions for the National Blood Service. Colne Valley Leisure Centre's large function area held another successful charity rock concert Rock 4 Kids which benefited several local children's good causes and attracted more than 500 people.



## Customer satisfaction

KAL takes customer satisfaction extremely seriously and endeavours to seek regular customer feedback through various mediums. The new Customer Relations Manager will also help to focus customer activities and bring new research into the organisation.

All KAL centres were rigorously assessed by Quest, the industry standard quality mark by the Spring. All indications were that they all received excellent marks and every centre went on to pass. Areas assessed included customer satisfaction, marketing, cleanliness, staff and facilities.

Customer satisfaction surveys were completed and analysed for Stadium Pool and Fitness Club, with the results on display. As a result of customer feedback, several new measures were introduced this year, including seating on the pool balcony at Scissett Baths.

Customer comments were also analysed at Dewsbury Sports Centre following the refurbishment and influenced its current extensive activity programme.

The Big Lottery Fund sites all received positive feedback with an impressive 81% of users at Westmoor returning to use the facilities.



## Our people



Every business is dependent on the hard work and commitment of its staff and KAL is no exception.

Dozens of employees have been working towards additional qualifications, including Fitness Instruction, Food Hygiene, Pool Plant Operation, Sales & Marketing and First Aid. KAL offers a vast breadth of training and development to all its staff to continually widen their knowledge and skills. This ensures the delivery of a high quality service for our customers and partners.

Hazel Francis, Operations Manager for Whitcliffe Mount Sports Centre was awarded the prestigious HR Austin Award from the Institute of Sport and Recreational Management for her outstanding achievements whilst studying her Higher Professional Diploma in Sport & Recreation Management. She was one of only two people in the country to receive the award.

In addition four Duty Managers graduated from Rotherham College this year with their Diplomas. The rolling programme of managers achieving this qualification continues each year.

KAL delivered a highly innovative and successful management training programme to its team of duty managers. About 60 people took part in the "It's Your Shift" programme which centred around the roles and responsibilities of being a Duty Manager.

The organisation shared its good practice and level of expertise with the luxury private health and fitness club Titanic Spa to deliver qualifications and training to all of its lifeguards.

KAL held its third Celebration Event in November, with many sites and people nominated for awards. The winners were Batley Sports and Tennis Centre ("Centre of the Year"), while Holmfirth Pool clinched the "Most Improved Centre" title. The coveted "Employee of the Year" award was given to engineer Dave Weavill for his enthusiasm and the "Spirit of KAL David Dagg" trophy was awarded to Beverley Bickerdike of Colne Valley Leisure Centre. Human Resources assistant Chris Jennings won the "Support Services Employee of the Year" title.



## Our future **KAL has lots of exciting plans about to unfold during 2007-8.**

One of our biggest projects is the new fitness suite development at Whitcliffe Mount Sports Centre, due to open in December. The £200,000 project will transform the old sports bar area into an airy, 30-station fitness suite. This promises to be a great asset for Whitcliffe Mount, the neighbouring school and the surrounding area.

A similar fitness suite to be built at Colne Valley Leisure Centre is in the early planning stages. Work to refurbish the site's wetside will begin in 2008, including new changing rooms, showers and toilets.

The pioneering Everyday Swim Kirklees has many big events and projects planned for the coming year, including a high profile launch at Dewsbury Sports Centre with national swimming ambassador and Olympic gold medallist Duncan Goodhew MBE.

Holmfirth Pool is due to close in autumn for a £1 million capital works improvement project to take place. This will refurbish the entire centre including new changing area, extended reception area, ventilation and water quality improvements. The pool is due to reopen in March 2008.

Community Science College @ Thornhill will shortly open its new Big Lottery Funded sports hall which will bring much-needed community sports facilities to the neighbourhood.



# Consolidated statement of financial activities 31/03/07

All incoming resources and resources expended derive from continuing activities.

There are no recognised gains and losses for the current year or prior year other than as stated above. A statement of total recognised gains and losses has therefore not been presented.

	Unrestricted funds 2007	Unrestricted funds 2006
	£	£
<b>INCOMING RESOURCES</b>		
<b>Incoming resources from charitable activities</b>		
Income from trading activities	5,664,768	4,889,935
<b>Activities for generating funds</b>		
Income from trading subsidiary	673,944	651,516
<b>Investment income</b>		
Interest receivable	35,690	39,485
<b>Grants receivable</b>		
Funding provided by Kirklees Metropolitan Council	2,911,718	3,509,527
<b>TOTAL INCOMING RESOURCES</b>	<b>9,314,620</b>	<b>9,127,458</b>
<b>RESOURCES EXPENDED</b>		
<b>Costs of generating funds</b>		
Costs incurred by trading subsidiary	619,915	662,768
<b>Charitable activities</b>		
Staff costs	5,328,633	5,058,250
Transport costs	36,139	36,846
Premises costs	2,111,210	1,823,101
Supplies and services	1,288,599	1,493,029
Kirklees Metropolitan Council service level agreements	332,079	314,367
<b>Total expenditure on charitable activities</b>	<b>9,096,660</b>	<b>8,725,593</b>
<b>TOTAL RESOURCES EXPENDED</b>	<b>9,716,575</b>	<b>9,388,361</b>
<b>TOTAL INCOMING RESOURCES LESS RESOURCES EXPENDED BEFORE PENSION SCHEME GAINS/(LOSSES)</b>		
	(401,955)	(260,903)
Other finance gains	48,000	27,000
Actuarial gain/(loss) on pension schemes	628,000	(164,000)
Past service gains	-	183,000
<b>NET MOVEMENT IN FUNDS</b>	<b>274,045</b>	<b>(214,903)</b>
<b>Fund balances brought forward at 1 April</b>	<b>(751,407)</b>	<b>(536,504)</b>
<b>Fund balances carried forward at 31 March</b>	<b>(477,362)</b>	<b>(751,407)</b>

# Consolidated balance sheet 31/03/07

The full financial statements from which the summary information is derived have been externally audited and received a unqualified audit opinion.

The full financial statements were approved by Board of Directors on 21st September 2007.

	2007		2006	
	£	£	£	£
<b>FIXED ASSETS</b>				
Tangible assets		584,497		620,377
<b>CURRENT ASSETS</b>				
Stocks	86,170		73,167	
Debtors	924,026		859,300	
Cash at bank and in hand	814,990		1,142,903	
	1,825,186		2,075,370	
<b>CREDITORS: amounts falling due within one year</b>	(2,404,045)		(2,579,154)	
<b>Net current liabilities</b>		(578,859)		(503,784)
<b>Total assets less current liabilities</b>		5,638		116,593
<b>Pension liability</b>		(483,000)		(868,000)
<b>Net liabilities including pension liability</b>		(477,362)		(751,407)
<b>FUNDS</b>				
Unrestricted funds - Charity		(462,359)		(731,364)
- Trading subsidiary		(15,003)		(20,043)
		(477,362)		(751,407)

These summarised accounts may not contain sufficient information to allow for a full understanding of the financial affairs of the charity. For further information, the full annual accounts, the auditors' report on those accounts and the trustees' annual report should be consulted; copies can be obtained from Kirklees Active Leisure, Stadium Business & Leisure Complex, Stadium Way, Huddersfield, HD1 6PG.

## Statement by the Trustees

- These are not the statutory accounts but a summary of information extracted from the annual accounts for the period ended 31st March 2007.
- The full financial statements from which the summary information is derived have been externally audited and were given an unqualified audit report.
- Full financial statements can be provided, upon request, by the office of the Chief Executive at Kirklees Active Leisure.
- The full financial statements were approved by the Directors on 21st September 2007.
- The financial statements will be filed with the Registrar of Companies and the Charity Commission in due course.

# Company information

<b>Company Number</b>	4331165
<b>Charity Number</b>	1091226
<b>Status</b>	A company limited by guarantee and not having share capital.
<b>Governing instrument</b>	Memorandum of Articles of Association
<b>Chairman</b>	D B Heddon
<b>Directors</b>	J Briggs J Carter B M Deadman Cllr M Harkin, later replaced by Cllr G Grailey S S Khela E M Lambert J Muscroft
<b>Company Secretary</b>	K Gillespie
<b>Chief Executive</b>	T Meehan
<b>Registered Office</b>	Stadium Business and Leisure Complex Stadium Way Huddersfield West Yorkshire HD1 6PG
<b>Registered Auditor</b>	Deloitte & Touche LLP 1 City Square Leeds LS1 2AL
<b>Banker</b>	Barclays Bank plc 17 Market Place Huddersfield HD1 2AB

## Testimonials

"I started regular swimming at Holmfirth Pool when I took early retirement at the age of fifty five to ward off sedentary induced obesity. The regular exercise has enabled me to maintain the same weight as when I retired.

The regular attendance has also the benefit of me making lots of friends and has widened my social life, which in retirement is usually curtailed.

The staff at Holmfirth Pool are by far the most efficient, obliging and courteous I have had the pleasure of dealing with."

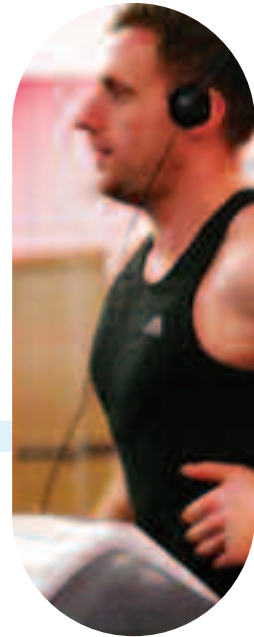
**Mr S Hunter, Holmfirth**

"I have been a member of Dewsbury Sports Centre for more than nine months and I can't fault it. The fitness suite has a very lively atmosphere, is well lit, great music playing all the time to keep us motivated and has a great added water feature.

The staff have always been friendly and helpful and very supportive. They are chatty and my overall fitness has improved greatly. A few of my mates are now members after I joined and they are all happy too. It's the best value for money fitness centre I have ever joined."

**Mr M George, Dewsbury**

**more people more active  
more often in kirklees**





KIRKLEES **ACTIVE** LEISURE

Stadium Business & Leisure Complex  
Stadium Way, Huddersfield, HD1 6PG

**T: 01484 234100 F: 01484 234111**

**E: [kirklees.active.leisure@kirklees.gov.uk](mailto:kirklees.active.leisure@kirklees.gov.uk)**

**W: [www.kirkleesactive.co.uk](http://www.kirkleesactive.co.uk)**